

**ES**  
**EAGLE SEAL**  
FOR MECHANICAL SEAL



**COMPANY**

P R O F I L E

[WWW.EAGLESEAL.NET](http://WWW.EAGLESEAL.NET)

The background of the slide is a photograph of industrial machinery, likely a large motor or pump assembly. The machinery is primarily blue and white, with various pipes, valves, and electrical components visible. The lighting is somewhat dim, giving it a professional, industrial feel. The text is overlaid on the left side of the image.

# **WELCOME TO**

## **EAGLE SEAL, INC.**

**Our company has been an organization that has been making a difference in the sealing sector by paying attention to both its quality and superior service understanding since its establishment, and has reached a position where it can address all the needs of the sector with its experienced staff and international connections**

**EAGLE SEAL Sealing Systems Inc., which increases its customer portfolio and product range every day with its conscious, devoted and entrepreneurial structure, continues to be the solution partner of our valued customers.**

# ABOUT US

**Eagle Seal Company is a leading provider of mechanical seal solutions, dedicated to delivering exceptional service and cutting-edge quality. Founded in [2010], we specialize in supplying, service, maintenance, and after-sales support for mechanical seals and related equipment. Our experience extends to upgrading seal materials and maintaining pumps to ensure optimal performance and longevity..**



A close-up, high-resolution photograph of a person's eye, showing the iris, pupil, and surrounding skin. The eye is looking slightly to the right. The background is blurred, suggesting an indoor setting with soft lighting. A dark grey diagonal shape is visible in the top-left corner of the image.

# VISION

**Our Vision is To be the local leader in mechanical seal technology, celebrated for our innovation, quality, and customer dedication. We strive to set industry standards with advanced solutions that drive efficiency and sustainability.**

# MISSION

Eagle Seal is dedicated to superior quality and exceptional customer support. We focus on delivering the best sealing materials efficiently and cost-effectively. Our commitment to continuous process optimization, cost control, and high-quality standards ensures that every team member plays a crucial role in achieving our goals.



# OUR HISTORY

**EAGLE SEAL** was established in Cairo with the vision of delivering world-class mechanical sealing solutions to Egypt's key industries. From the start, the company focused on quality, reliability, and technical expertise.



**Over the years, EAGLE SEAL has grown into a trusted partner for more than 170 leading companies in the oil & gas, fertilizers, food, and chemical industries. By providing not only seals but also engineering support, installation guidance, and spare parts management, the company built its reputation as a reliable supplier that understands the challenges of heavy industry.**



**With strong technical knowledge in advanced materials such as silicon carbide, tungsten carbide, and elastomers, EAGLE SEAL continues to deliver customized sealing solutions that extend equipment life and reduce downtime. Today, the company is recognized as a leader in Egypt's sealing industry and is preparing for regional expansion into Africa and the Middle East.**





# **OUR SERVICES**

# MECHANICAL SEAL ENHANCEMENT

Offering expert recommendations for optimal material selection and design improvements to enhance performance and extend the lifespan of mechanical seals.

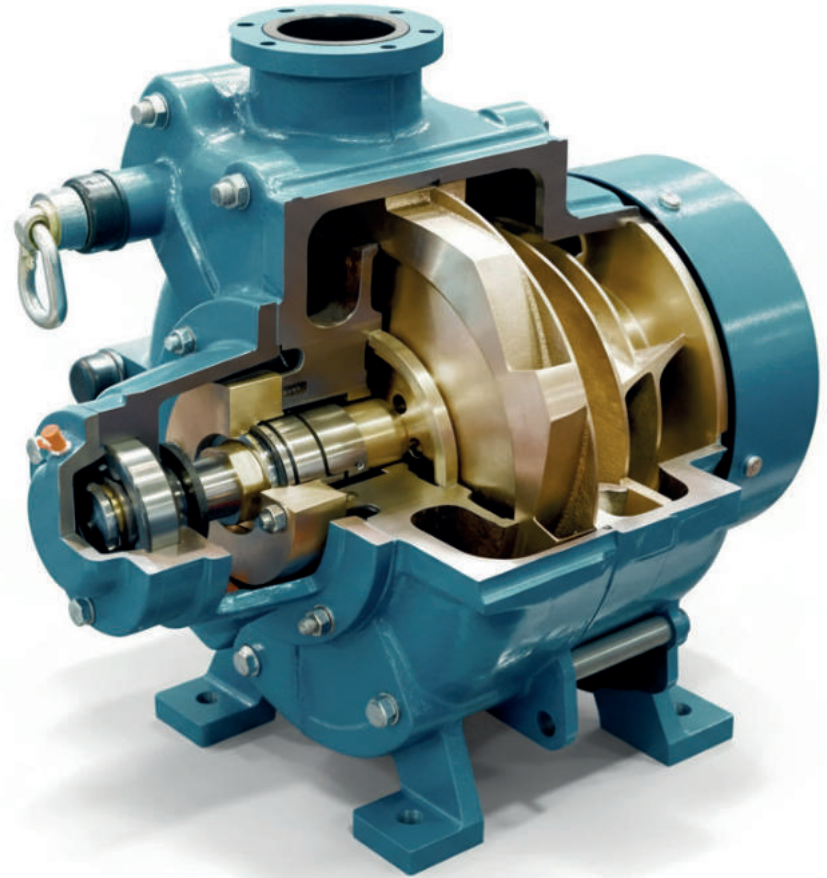
# 1

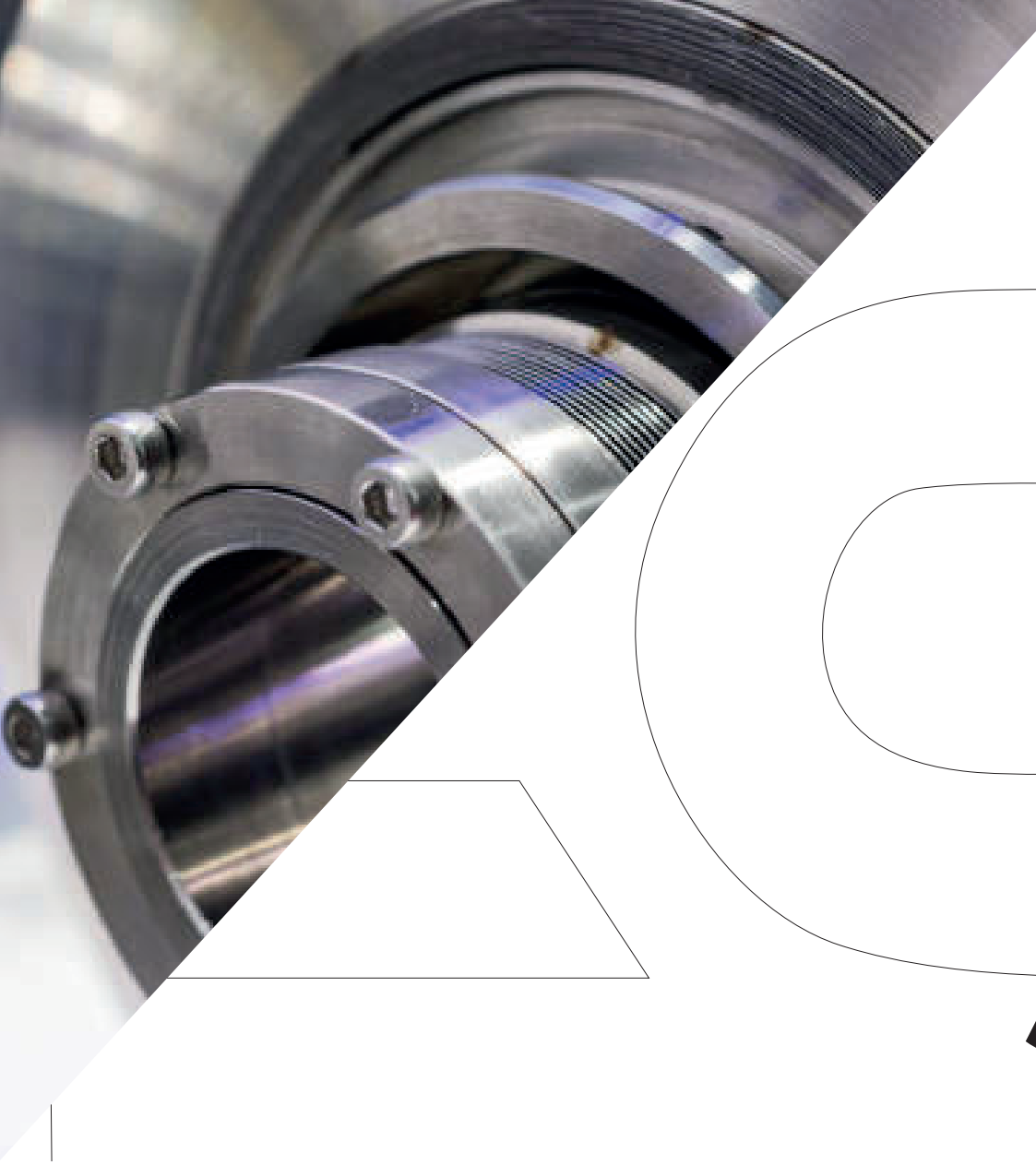


# SALES

Providing a comprehensive selection of premium mechanical seals designed to address a wide array of industrial requirements.

# 2





# TECHNICAL SUPPORT

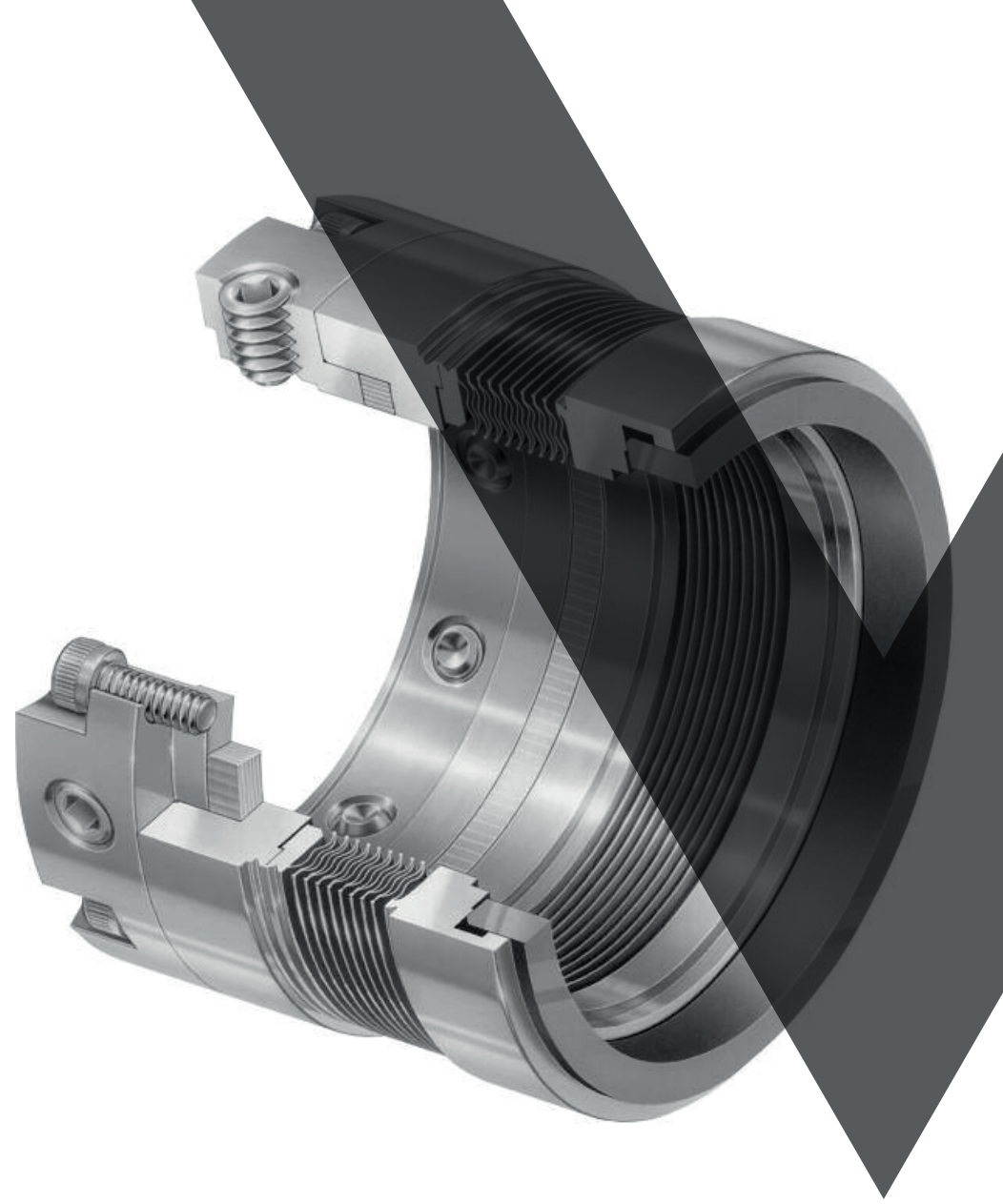
Offering expert guidance and support to ensure the optimal selection and application of our products.

# 3

# AFTER SALES SERVICE

Delivering proactive support to resolve issues and maximize the performance of your mechanical seals.

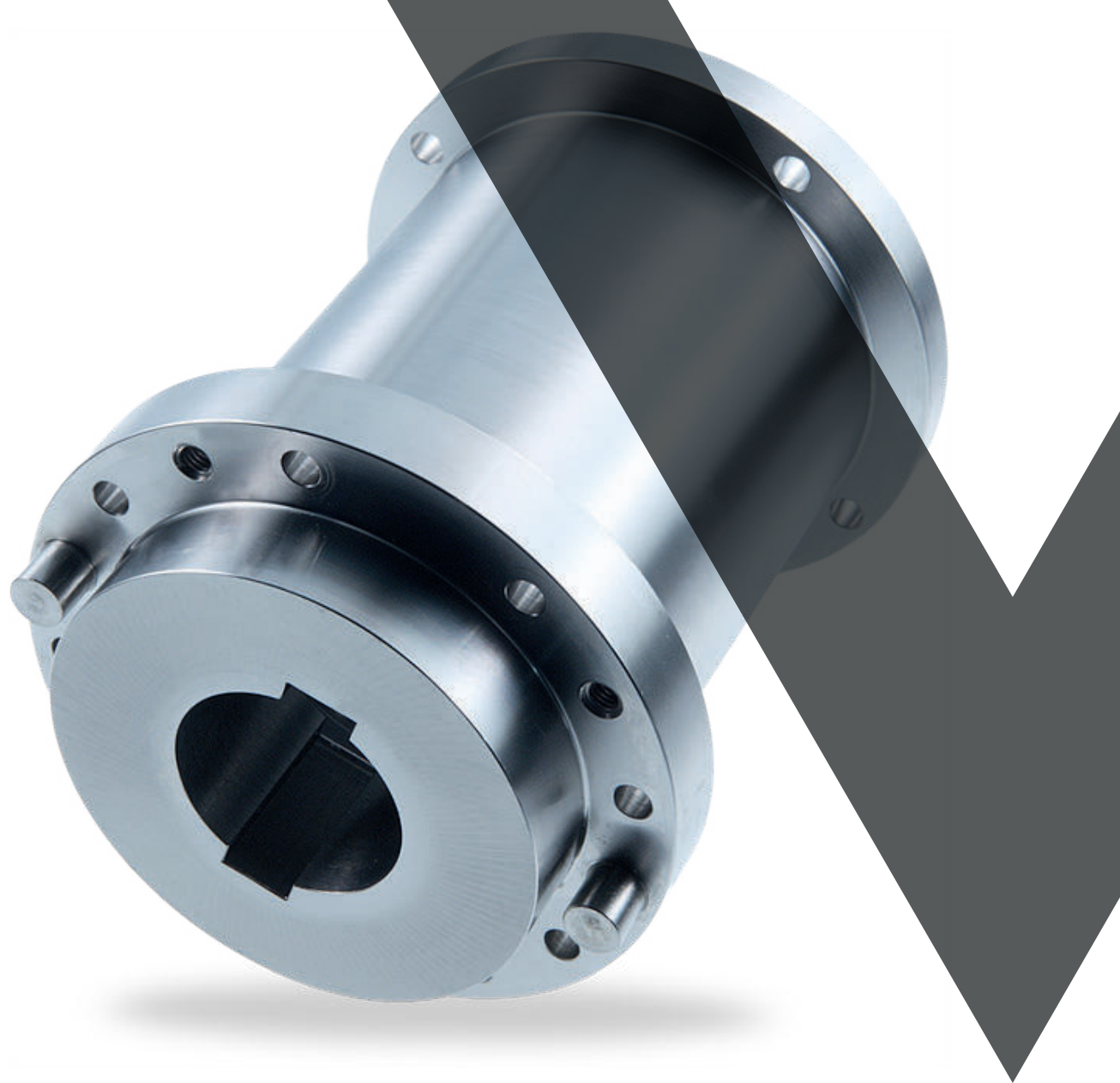
# 4



# LEADERSHIP

Our leadership team sets the strategic direction of Eagle Seal Inc., guiding the company toward innovation, sustainability, and customer satisfaction. With decades of industry experience, our leaders ensure that every decision aligns with our values of quality and reliability. Their forward-thinking vision drives continuous improvement across all departments. They believe in empowering employees to take ownership and grow together .with the company

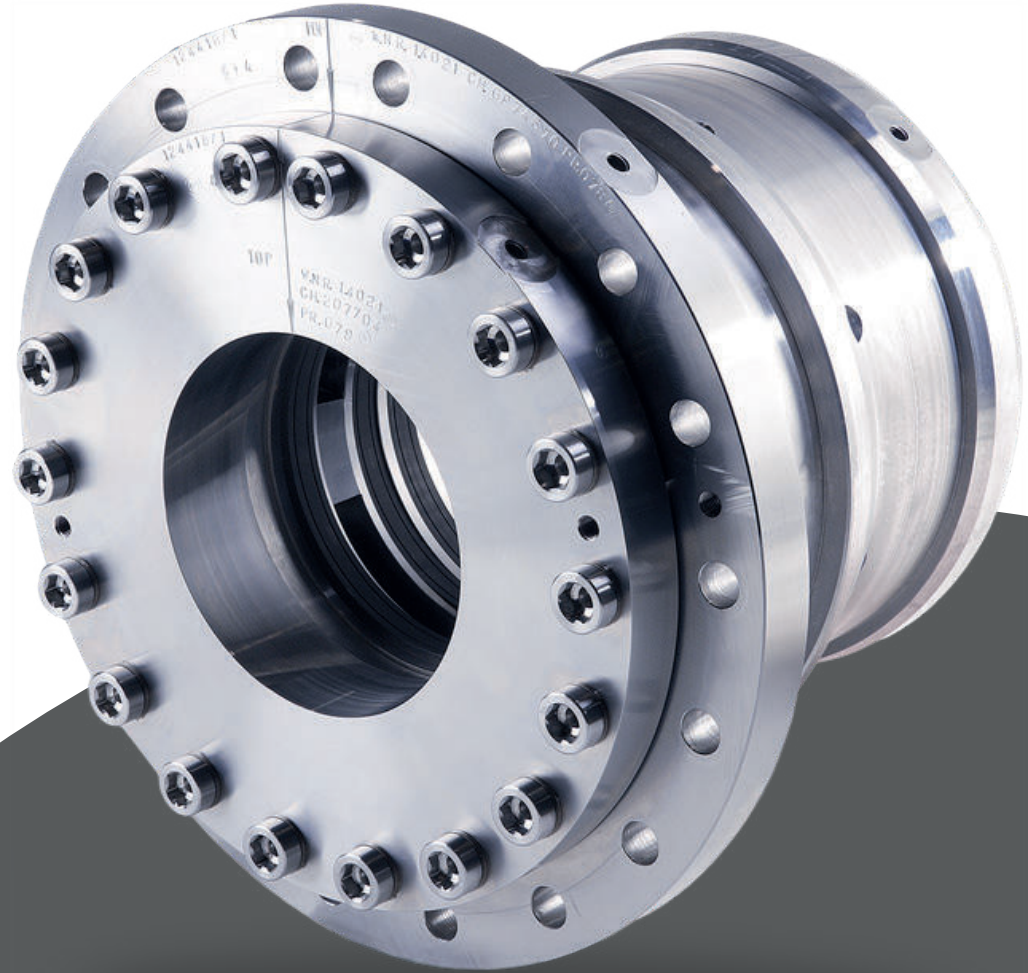
# 5



## ENGINEERING & TECHNICAL EXPERTISE

The engineering department forms the backbone of our operations, specializing in mechanical seal design, performance optimization, and system integration. Our engineers combine theoretical knowledge with practical field experience to deliver precise solutions. Every project is analyzed in detail to ensure efficiency and durability. Through continuous training and research, our technical experts maintain cutting-edge competence in seal technology.

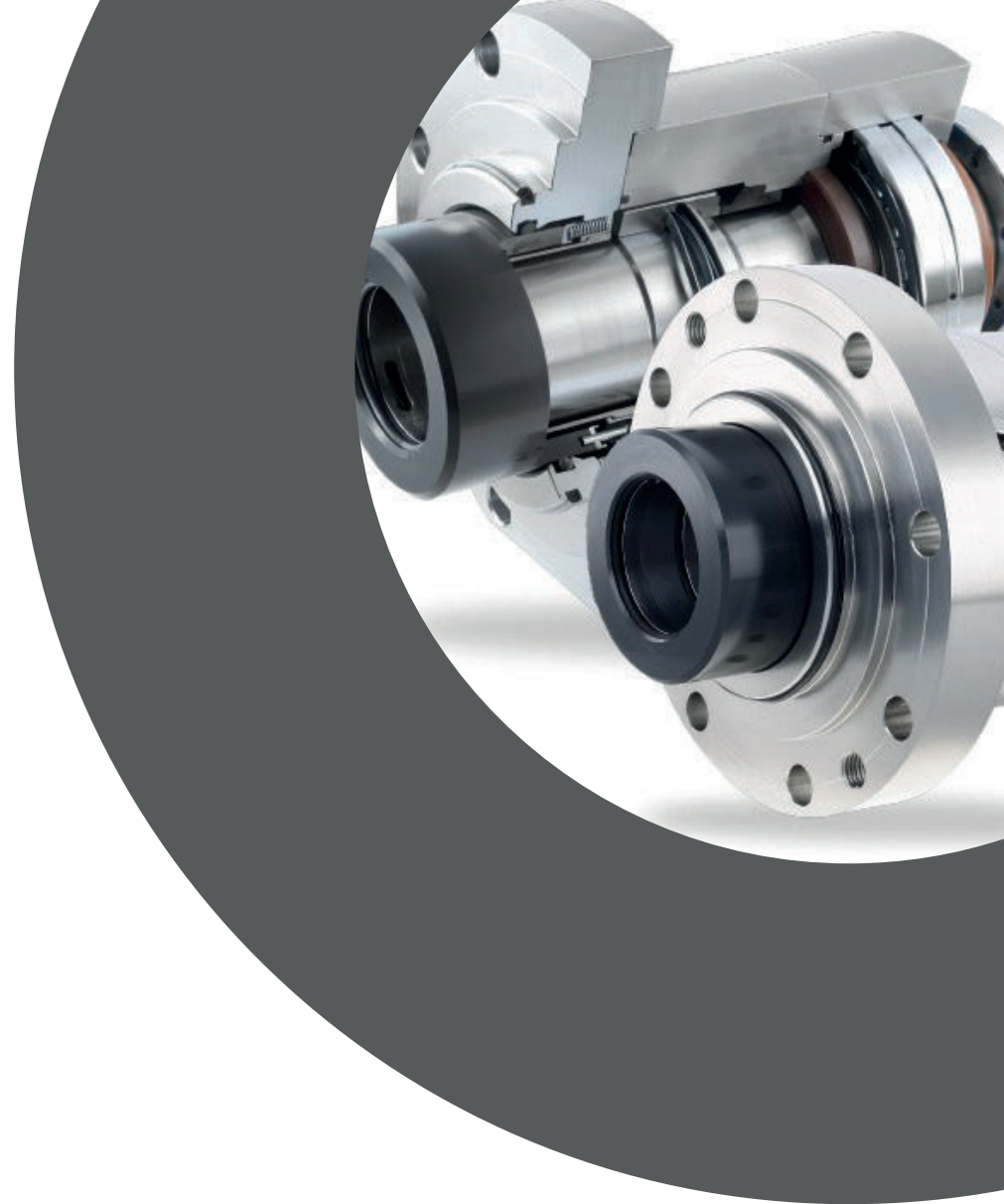
# 6



## RESEARCH & DEVELOPMENT TEAM

Innovation defines Eagle Seal's R&D team. They constantly explore new materials, designs, and sealing mechanisms to improve product lifespan and performance. Their goal is to develop sustainable and cost-effective sealing technologies suitable for diverse industries. Collaboration with global partners enables knowledge sharing and technical breakthroughs. The R&D department ensures our company remains at the forefront of technological advancement.

# 7



# QUALITY ASSURANCE DEPARTMENT

Quality is at the heart of everything we do. The QA team rigorously inspects every seal, component, and maintenance process to guarantee superior performance and safety. They implement international standards such as ISO and API to ensure product reliability. Using advanced testing instruments, they verify sealing integrity under extreme conditions. Their commitment ensures that clients receive only flawless and certified solutions.

# 8

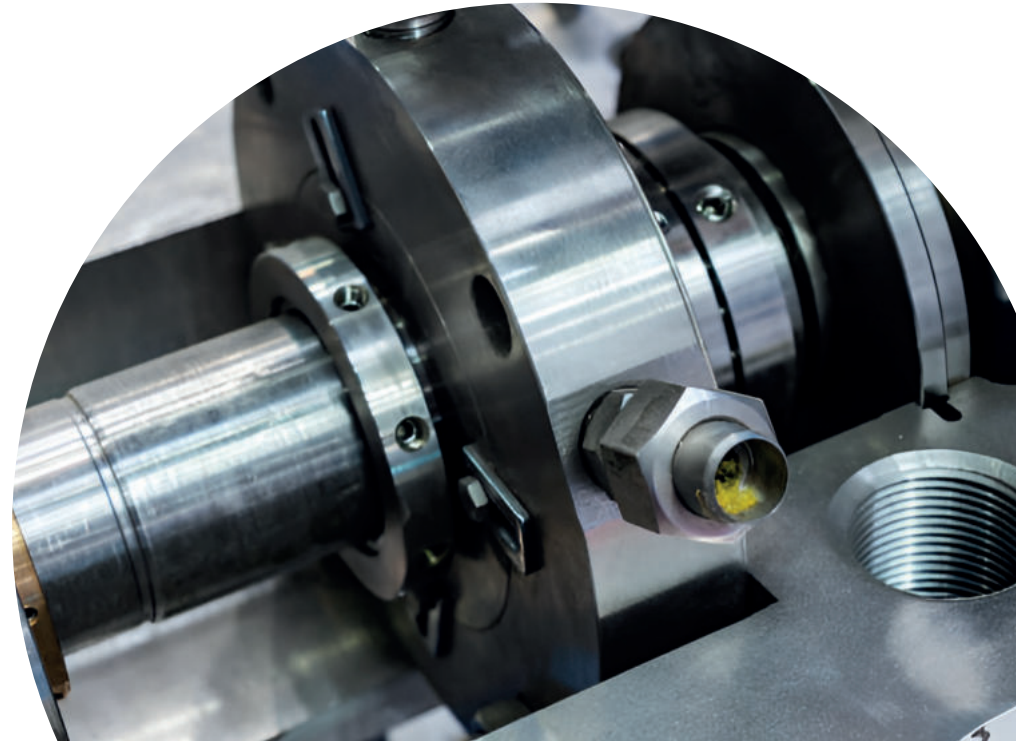


**PLUG &  
RUN**

# MAINTENANCE & SERVICE DIVISION

**Our maintenance division ensures the long-term performance of customer equipment. With skilled technicians and mobile service units, they handle on-site repairs, inspections, and overhauls. Their expertise extends to pumps, compressors, and all types of mechanical seals. Quick response and preventive maintenance reduce downtime and enhance operational efficiency. This team embodies our promise of reliability and customer support.**

9



# QUALITY STANDARDS & COMPLIANCE

## Standards

At EAGLE SEAL for Mechanical Seals, quality and reliability are the foundation of our work. We are committed to meeting internationally recognized standards to ensure that every seal we produce delivers superior performance, safety, and durability.

Our products are designed and manufactured in compliance with major global standards, including API 682, ISO 9001, and DIN 24960 / EN 12756, as well as ASME & ISO guidelines.

By maintaining these standards, EAGLE SEAL guarantees that each product is fully compatible with leading pump systems and capable of performing efficiently and consistently in the most demanding industrial environments.

# 10



Thank  
you

📍 1 EL RAI EL BARRI ST, ELMAZALLAT, SHOBRA, CAIRO  
✉ SALES@EAGLESEAL.NET  
✉ SALES1@EAGLESEAL.NET  
✉ SALES2@EAGLESEAL.NET  
✉ EAGLE.SEAL@YAHOO.COM  
🌐 WWW.EAGLESEAL.NET  
☎ +2 01027220483 / +2 0106666054 / 01033955269

